

UNIQUE BARCELONA PENTHOUSE FOR RENT



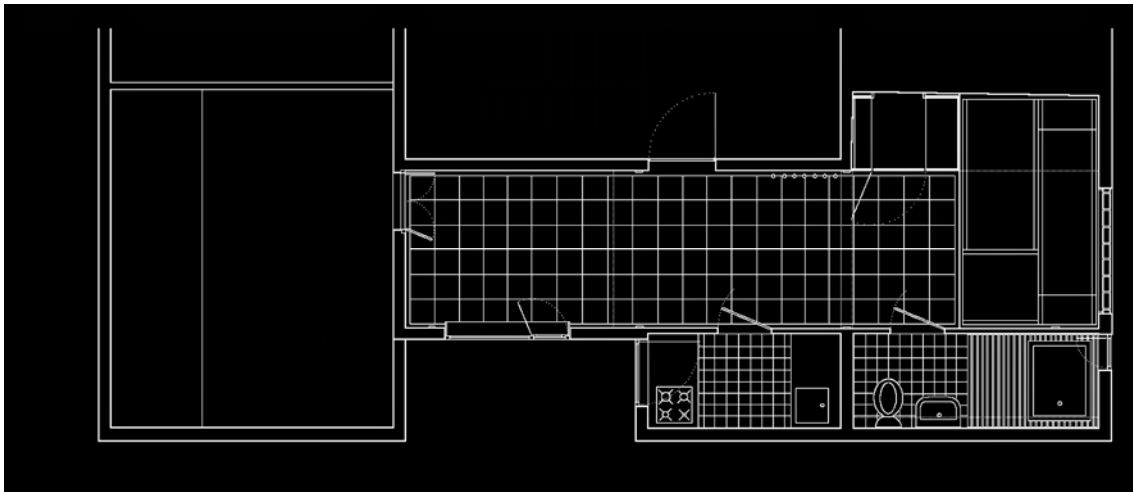
DAILY OR WEEKLY. FOR INFORMATION ABOUT
AVAILABILITY, PLEASE CONTACT MR JAKOB:
PHONE 0034 933 198 867, E-MAIL jakob@elpaseo.jazztel.es

It isn't huge, but this penthouse "pied-à-terre" in the Barcelona district of Poblesec is a habitable jewel box with a Japanese touch. Stretching from the wooden floor of the terrace to the tatami sleeping niche, it provides a surprising spatial wealth, a sequence of different atmospheres. The apartment was built in 2003 according to the project of architect Markus Grob. Slightly renovated in 2008, it is in perfect condition.

Separated from the main room are the small but smartly laid out kitchen and bathroom, the latter equipped with a Japanese cedar bathtub. Furniture includes an Alvar Aalto table, two armchairs by Kurt Thut and a Swiss design classic, the *Landi Chair*.

The 6th floor of this building from the early 1930's offers great views over the city. Situated in an unusually quiet street with hardly any traffic, it is just a few steps away from the lush nature of Montjuïc, yet equally close to the Paral.lel – one of Barcelona's mythical avenues – and the adjacent El Raval barriò, bustling with life like the nearby Ramblas. In addition to the Old Town, several of the city's most thrilling areas are within a 30 minute walk: its entertainment and commercial core as well as the old harbour and the Barceloneta beach. Furthermore, the apartment has excellent connections to the public transport system, including the subway lines 2 and 3, the Montjuïc cable cars and the bike lane network.





MARKUS GROB, ARCHITECT

The Apartment

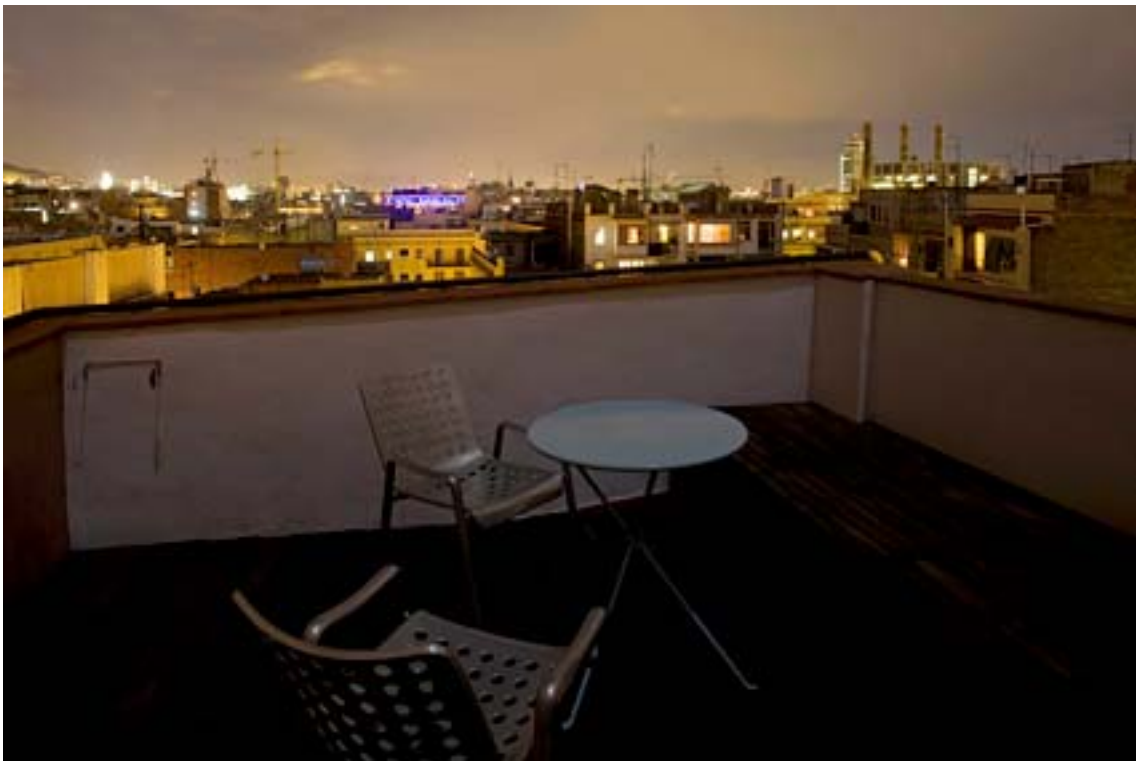
- Size : 30m² + 14m² terrace
- Occupancy : 2
- Number of beds: 1
- Level: 6th
- Elevator: yes

Facilities

- Heating
- Bed linen and towels
- Broadband internet connection
- 19' TV, satellite connection
- DVD Player
- i-Pod Player
- Hair-dryer
- Washing machine
- Iron

Terms and Conditions

- 1 to 3 days: 150 € per day
- 4 to 6 days: 125 € per day
- 1-3 weeks: 100 € per day
- 1 month (maximum rental time): 2500 €
- Rental payment method: bank transfer in advance or cash on arrival
- Deposit: 200 € in cash, refunded on departure
- Check-in time: 2:00 pm
- Check-out time: 2:00 pm
- Water, gas, electricity, internet connection: included
- Pets accepted: no
- Cleaning: once weekly



The east-facing terrace is sunny and warm on winter mornings, pleasantly cool and shady on summer afternoons. The outdoor equipment includes a barbecue grill.



More than just aesthetic counterparts, the two square windows guarantee a perfect cross-ventilation. A cool sea breeze keeps the inside fresh even on the peak of the summer.



Possibly the architects masterpiece on this project is the way he's providing ample storage space. The wardrobe with its mobile rack expands above the tatami niche, shoes find their place beneath the wooden structure, and further supply closets are accessible under the mats.



Contrarily to the purism of the tatami niche, the kitchen utensils are openly displayed. Guests are welcome to use the basic food products on hand, and if they wish, advice about local markets, restaurants and whatever they need to know to find their way around town will gladly be furnished.



Yes, it's a bathtub, but the kind you only find in Japanese luxury spas.



For further details, please contact

Mr Markus Jakob Paseo de Picasso, 40, 2^a 3^o E 08003 Barcelona
phone 0034 933 198 867 cell 0034 659 563 329
jakob@elpaseo.jazztel.es